

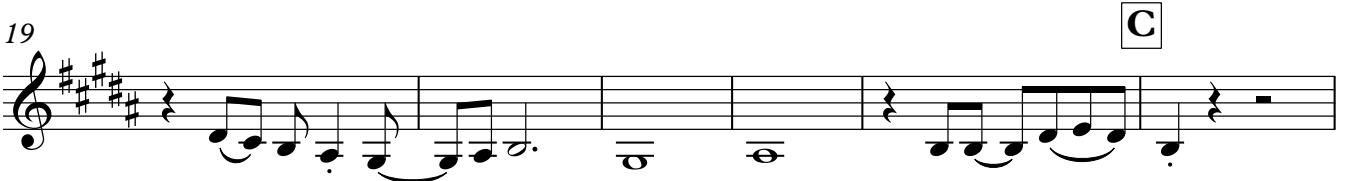
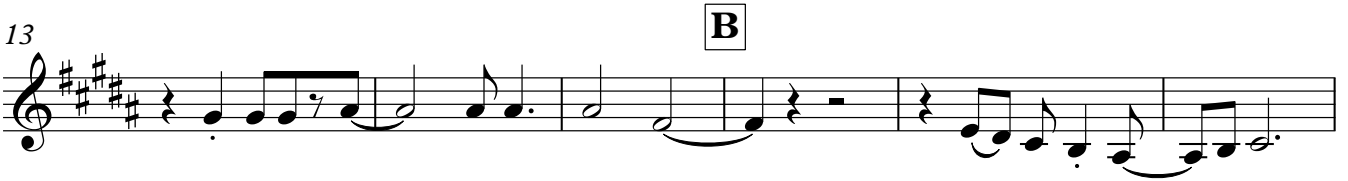
Clarinet in Eb

# Feliz Navidad

- Prospero año y Felicidad -

Words & Music JOSÉ FELICIANO  
arr. BRAM SOENTJENS

Moderato ♩ = 138



Clarinet in E $\flat$

# Frosty the Snowman

"I'll be back on Christmas Day"

Words & Music W. ROLINS & S. NELSON  
arr. BRAM SOENTJENS

♩ = 120

2 **A**

*mf*

8 **B**

*mf*

13

*mf*

19 **C**

3

*mf*

27 **D**

*mf*

33 **E**

*mp*

39

*f*

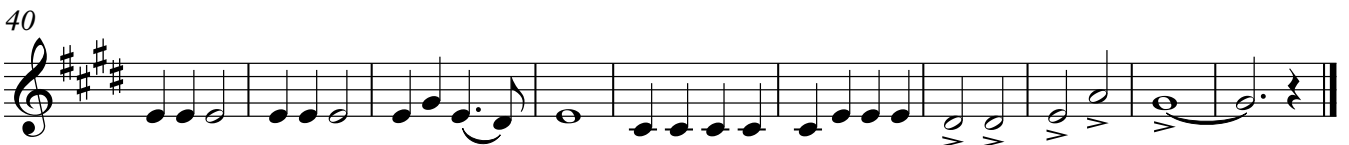
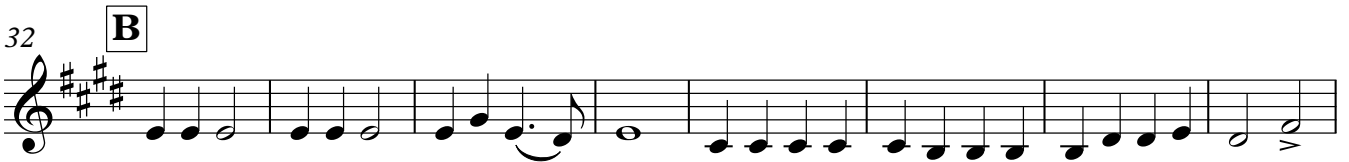
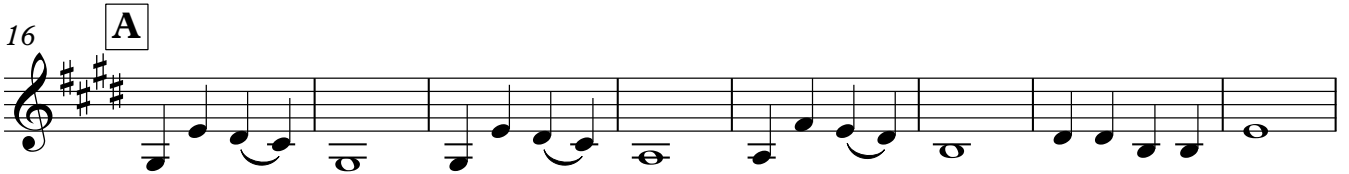
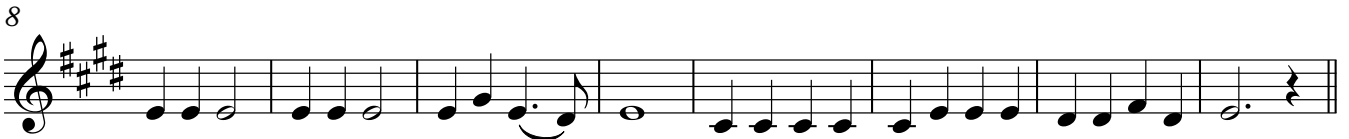
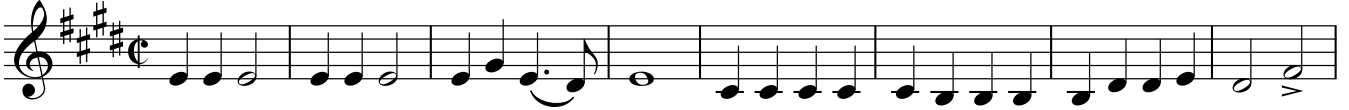
Clarinet in Eb

# Jingle Bells

- One Horse Open Sleigh -

Words & Music JAMES PIERMONT  
arr. BRAM SOENTJENS

♩ = 80



Clarinet in Eb

# Rudolph the Red-Nosed Reindeer

- Christmas Song -

Words & Music ROBERT LEWIS MAY  
arr. BRAM SOENTJENS

Moderato ♩ = 80

9 **A** ♩ = 108

17

25

33

41

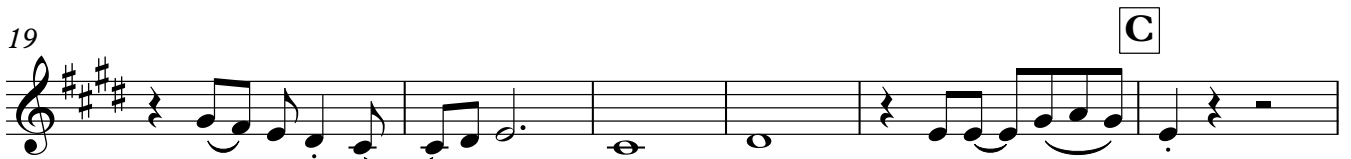
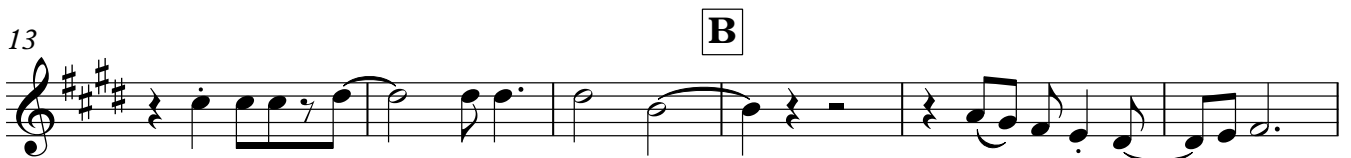
Clarinet in Bb

# Feliz Navidad

- Prospero año y Felicidad -

Words & Music JOSÉ FELICIANO  
arr. BRAM SOENTJENS

Moderato ♩ = 138





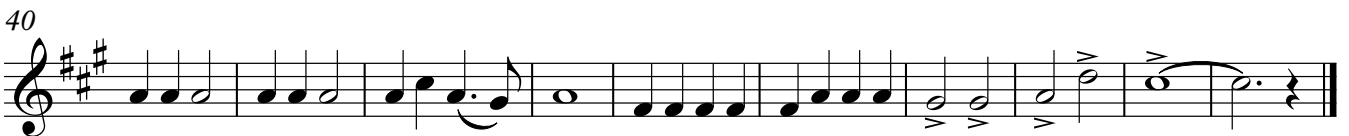
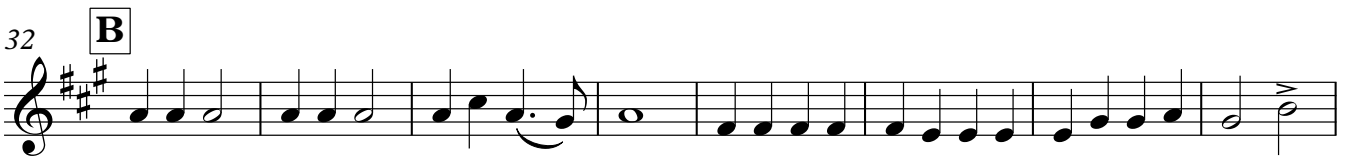
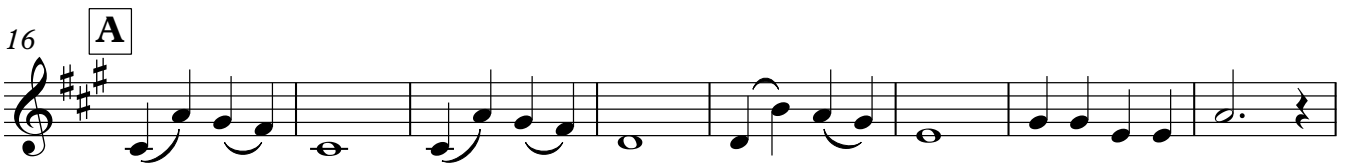
Clarinet in B $\flat$

# Jingle Bells

- One Horse Open Sleigh -

Words & Music JAMES PIERMONT  
arr. BRAM SOENTJENS

$\text{♩} = 80$



Clarinet in Bb

# Rudolph the Red-Nosed Reindeer

- Christmas Song -

Words & Music ROBERT LEWIS MAY  
arr. BRAM SOENTJENS

Moderato ♩ = 80

Musical notation for the first staff, starting at measure 1. The key signature is three sharps (F#, C#, G#) and the time signature is 4/4. The melody begins with a quarter rest, followed by a series of quarter notes: G4, A4, B4, C5, B4, A4, G4, F#4, E4, D4, C4. A dynamic marking of *p* is placed below the first note. A crescendo hairpin starts under the eighth measure and ends with a dynamic marking of *mf* under the eleventh measure.

9 **A** ♩ = 108

Musical notation for the second staff, starting at measure 9. The key signature is three sharps and the time signature is 4/4. The melody begins with a quarter rest, followed by eighth notes: G4, A4, B4, C5, B4, A4, G4, F#4, E4, D4, C4. A dynamic marking of *f* is placed below the first note.

17

Musical notation for the third staff, starting at measure 17. The key signature is three sharps and the time signature is 4/4. The melody continues with eighth notes: G4, A4, B4, C5, B4, A4, G4, F#4, E4, D4, C4.

25 **B**

Musical notation for the fourth staff, starting at measure 25. The key signature is three sharps and the time signature is 4/4. The melody begins with a quarter rest, followed by a whole note: G4. A dynamic marking of *mp* is placed below the note. A bracket above the staff indicates a four-measure rest.

33 **C**

Musical notation for the fifth staff, starting at measure 33. The key signature is three sharps and the time signature is 4/4. The melody begins with a quarter rest, followed by eighth notes: G4, A4, B4, C5, B4, A4, G4, F#4, E4, D4, C4. A dynamic marking of *f* is placed below the first note. A first ending bracket labeled '1.' spans the last two measures of the staff.

41 **2.**

Musical notation for the sixth staff, starting at measure 41. The key signature is three sharps and the time signature is 4/4. The melody begins with a quarter rest, followed by eighth notes: G4, A4, B4, C5, B4, A4, G4, F#4, E4, D4, C4. A second ending bracket labeled '2.' spans the last two measures of the staff.