

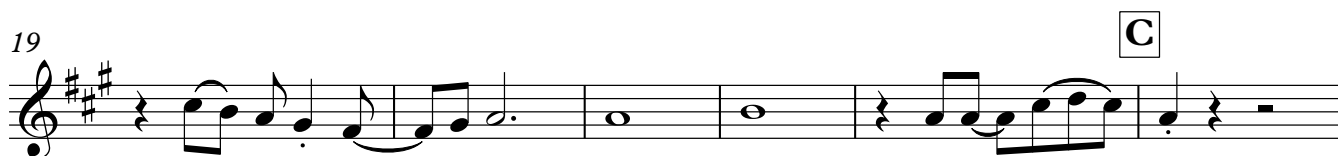
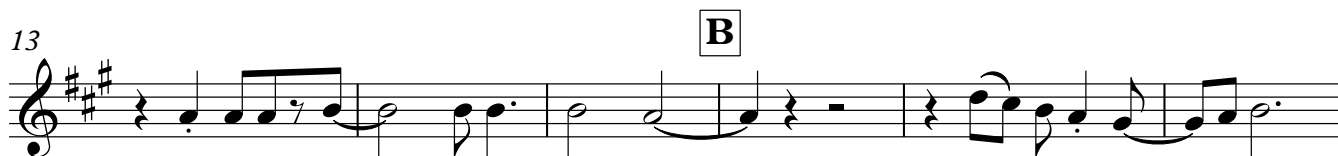
Horn in F

Feliz Navidad

- Prospero año y Felicidad -

Words & Music JOSÉ FELICIANO
arr. BRAM SOENTJENS

Moderato ♩ = 138



Horn in F

Frosty the Snowman

"I'll be back on Christmas Day"

Words & Music W. ROLINS & S. NELSON

arr. BRAM SOENTJENS

♩ = 120

2 **A**

mf

8 **B**

mf

13

mf

19 **C**

solo

mf

4

27 **D**

mf

33 **E**

mp

39

f

2

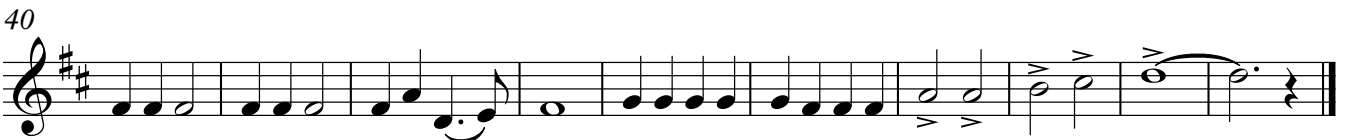
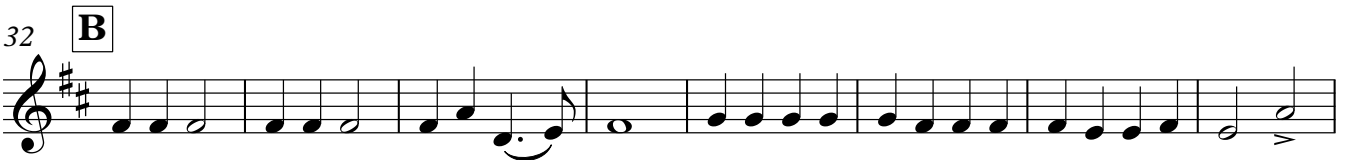
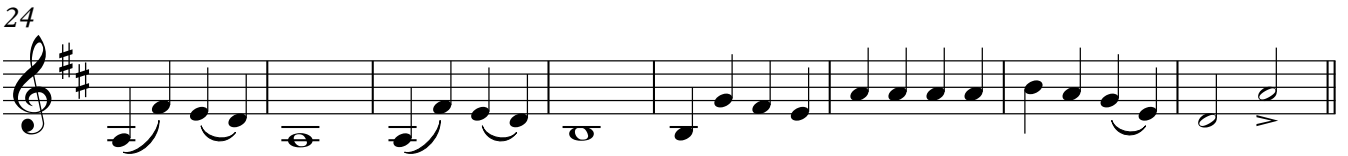
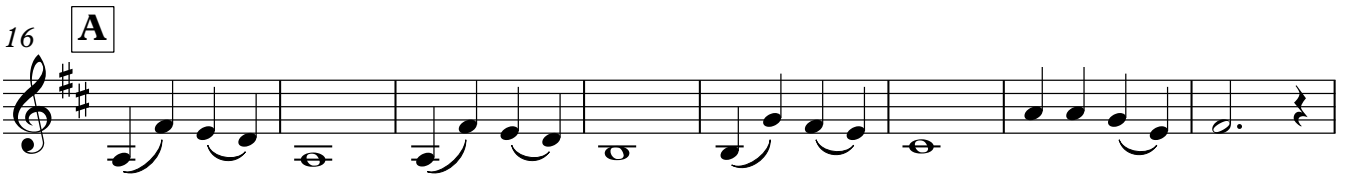
Horn in F

Jingle Bells

- One Horse Open Sleigh -

Words & Music JAMES PIERMONT
arr. BRAM SOENTJENS

♩ = 80



Horn in F

Rudolph the Red-Nosed Reindeer

- Christmas Song -

Words & Music ROBERT LEWIS MAY
arr. BRAM SOENTJENS

Moderato ♩ = 80

Musical notation for the first staff, starting at measure 1. The key signature is F major (one sharp) and the time signature is 4/4. The tempo is Moderato with a quarter note equal to 80 beats per minute. The dynamics range from *p* (piano) to *mf* (mezzo-forte). The melody consists of quarter and eighth notes, with a crescendo leading to the *mf* dynamic.

9 **A** ♩ = 108

Musical notation for the second staff, starting at measure 9. The key signature is F major and the time signature is 4/4. The tempo is marked with a quarter note equal to 108 beats per minute. The dynamic is *f* (forte). The melody features eighth and quarter notes.

17

Musical notation for the third staff, starting at measure 17. The key signature is F major and the time signature is 4/4. The melody continues with eighth and quarter notes.

25 **B**

Musical notation for the fourth staff, starting at measure 25. The key signature is F major and the time signature is 4/4. A four-measure rest is indicated by a thick horizontal line with the number '4' above it. The dynamic is *mp* (mezzo-piano). The melody resumes with quarter notes.

33 **C**

Musical notation for the fifth staff, starting at measure 33. The key signature is F major and the time signature is 4/4. The dynamic is *f* (forte). The melody includes a first ending bracket labeled '1.' at the end of the staff.

41 **2.**

Musical notation for the sixth staff, starting at measure 41. The key signature is F major and the time signature is 4/4. The dynamic is *f* (forte). The melody includes a second ending bracket labeled '2.' at the end of the staff.